

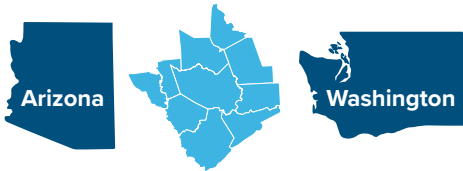
POPULATION AND DEMOGRAPHICS

7.5 million

residents for Houston-Pasadena-The Woodlands MSA

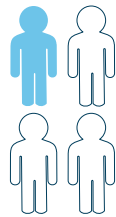
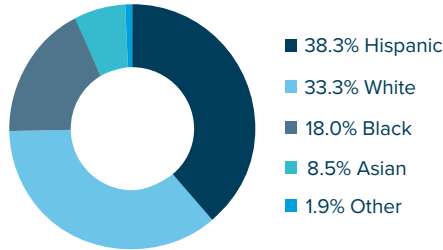
Nation's 5th most populous metro area

Metro Houston ranks between Arizona and Washington by population

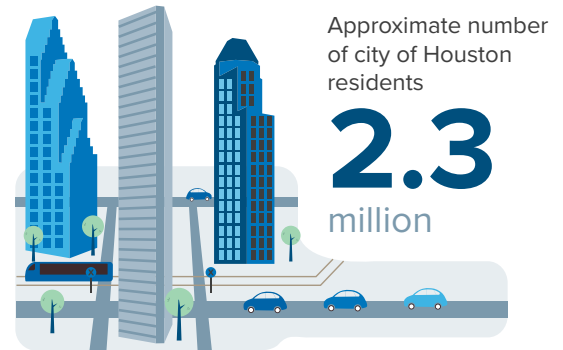


Race/Ethnicity: Houston MSA

Houston today mirrors the U.S. in 4 decades



Nearly 1 in 4 Houstonians are foreign born



Houston is the nation's 4th most populous city

GLOBAL PRESENCE

15 foreign governments

maintaining trade and commercial offices

39 Active International Chambers of Commerce or Trade Associations

In '22, cargo activity at the Houston Ship Channel

supported 1.5 million

direct, indirect, and induced jobs across the state of Texas.

139 Houston firms

operate more than 3,100 foreign subsidiaries

2 international airports

George Bush Intercontinental (IAH)
William P. Hobby Airports (HOU)

IAH ranks 6th in the nation in number of international destinations

Houston Airport System

66 international destinations **120** domestic destinations

186 non-stop destinations

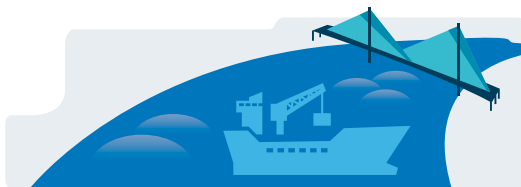
\$362.1 billion

in trade was handled by the Houston-Galveston Customs Districts in '23

*Numbers may not sum due to rounding

\$124.8 billion in imports (in '23)

\$238.3 billion in exports (in '23)



Houston is the #1 exporting metro

The Houston Ship Channel is ranked

1st

U.S. port in foreign waterborne tonnage

1st

U.S. port in total foreign and domestic waterborne tonnage

Port Houston is the busiest Gulf Coast container port

2nd U.S. port in total foreign cargo value

5,000+

Houston companies doing business abroad

1,700+

Houston firms report foreign ownership

Since '21, more than

130 foreign-owned

firms have announced projects in Metro Houston.

82 nations

have consular representation in Houston

19 sister-city relationships

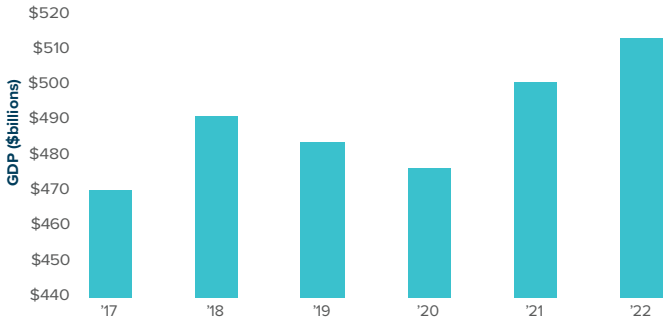
17 foreign banks

are located in Houston from 9 nations

ECONOMY

If Houston were a country, it would rank as the 25th largest economy in the world, between Poland and Argentina

Metro Houston - '17-'22 Real GDP (\$ billions '17 constant dollars)



Houston – The Woodlands – Sugarland MSA GDP has grown at a

1.7 percent compound annual growth rate Since '17, after adjusting for inflation

7TH largest U.S. metro economy

24 Fortune 500 Companies call Houston home

EMPLOYMENT

3.4 million

jobs in the Houston MSA



Health, Education, and Business & Professional Services account for over

1 in 4 of the region's jobs

The goods-producing sector accounts for nearly

1 in 6 of the region's jobs



Industry Share of Houston MSA Employment

- 19.9% Trade, Transportation, and Utilities
- 16.3% Professional and Business Services
- 13.5% Educational and Health Services
- 13.3% Government
- 10.7% Leisure and Hospitality
- 9.2% Mining, Logging and Construction
- 6.9% Manufacturing
- 5.5% Finance and Insurance
- 0.9% Information
- 4.0% Other Services

INDUSTRIES

The Texas Medical Center is the world's largest medical complex.

TMC employs **120,000+** workers



\$3 billion in construction projects underway

50 million developed square feet

10 million annual patient encounters

180,000+ annual surgeries

Houston is home to **72,220** engineers and architects and related techs.



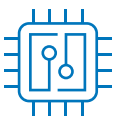
Approximately **238,000**

people work in the region's manufacturing industry sector

Houston has more than **500** aviation and aerospace-related companies



Houston is home to **9,300** tech-related firms, including more than 1,000 venture-backed startups



Houston employs **87,400** workers in computer & mathematical occupations